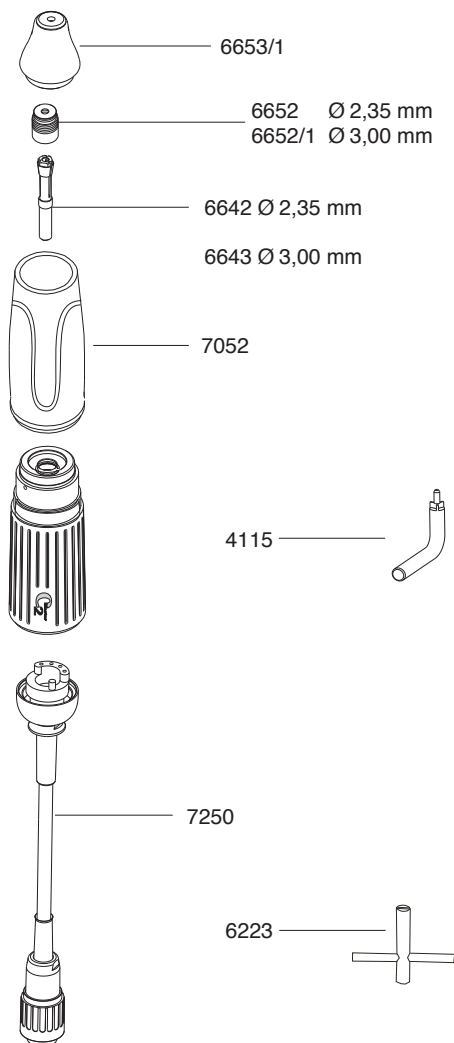


8. Replacing the chuck

- 8.1 Remove the motor cable 15. To do so unscrew the cap 16 from the motor and loosen the cable by pulling out the plug-in seal 17.
- 8.2 Open the chuck and withdraw the rotary instrument. Unscrew the end of the handpiece 21 (right-handed thread).
- 8.3 Remove sealing cap 24
- 8.4 Use a number 6223 wrench 23 to hold the motor end of the spindle. Engage the triangular section of the chuck with a No. 4115 chuck tool 22. To prevent the chuck becoming distorted, an instrument shank or the pin supplied must always be inserted into it. Hold the number 6223 23 wrench tightly and turn the chuck tool anti-clockwise to unscrew the chuck completely - the chuck has a right-handed thread!



9. Care and maintenance

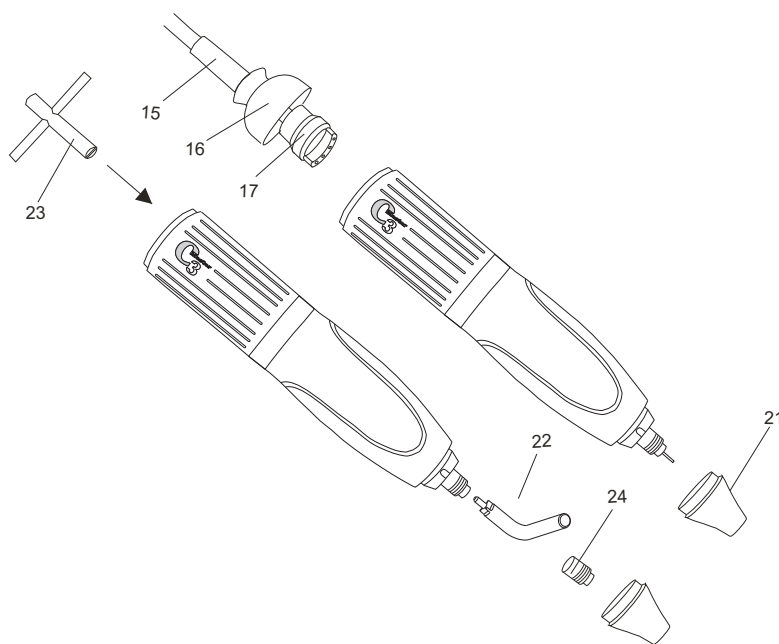
Caution: Do not clean your C3 Master motorhandpiece with compressed air!

Chuck: should be cleaned and re-greased once in a while, depending on how dirty it is.
As C3 Master units have no commutators, carbon brushes or ventilation parts, no further maintenance is required.

- 8.5 Clean the chuck, grease it lightly and place it in the spindle. Use the tools to screw the chuck in - clockwise and as far as possible - as described in section 8.4, and tighten it slightly.
Replace the plug-in seal 17 and screw the cap 16 back into place. Screw the sealing cap 24 and the end of the handpiece 21 on again.

Please note:

The tools 22 and 23 are to be found in the base of the handpiece rest!



10. Possible faults

Should the handpiece be overloaded, respectively, jammed, for safety reasons the unit will switch itself off.

- Release knee/foot switch and operate it again; the unit is ready for use immediately
bench controller version only

- When using the bench version without a pedal switch, the speed control knob should be turned to "0", when the desired speed is selected again; the unit is ready for use immediately.

- When using the bench version with a pedal switch it should be released and operated again; the unit is then ready for use again.

all versions

if the unit should not be running after doing as described above the 2 fuses have to be checked and eventually exchanged.

The fuses (2x T2AH250V/2x T4AH100V-115V) are to be found at the rear of the unit beneath the socket 1.