
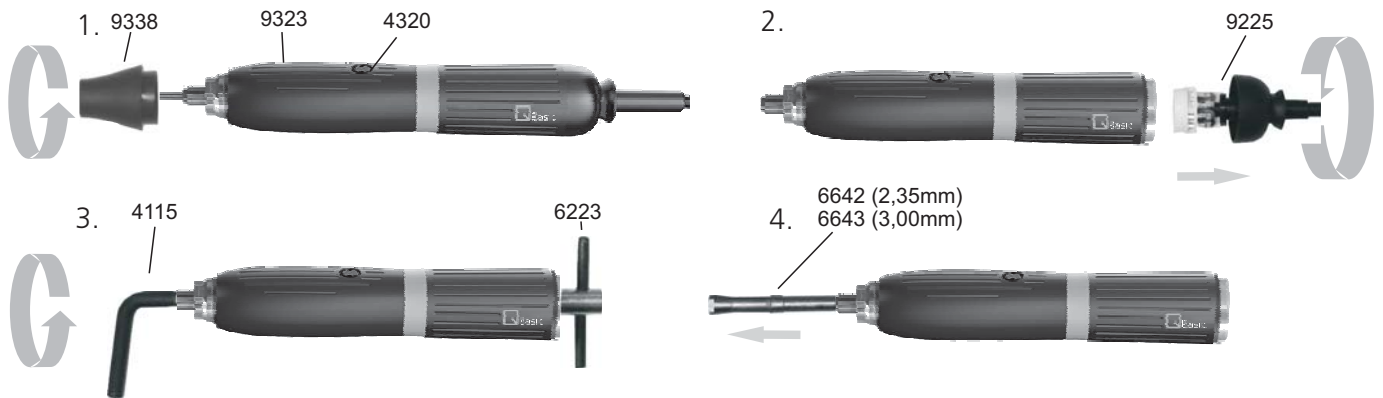


## 8. Cleaning and maintenance / Removing the chuck




The  **Basic** motor handpiece is designed for maximum durability and therefore, the chuck and the tip should be removed and cleaned from time to time.

### 8.1 Removal of chuck on the **Basic** handpiece



1. Remove tool and unscrew tip of handpiece
2. Remove cap from motor and pull out the plug
3. Place the chuck key (Art. no. 4115) on the open chuck, use a number 6223 counterstay wrench to hold the motor end of the spindle
4. Remove the chuck (art.no. 6642) from the shaft

After thoroughly cleaning the chuck, before replacing, it should be slightly greased on the outer surface (e.g., with grease art.no. 51/1).  
Only fasten the chuck lightly when reinstalling! The chuck will fix itself firmly as part of its normal operation.

-  To optimise the precision and durability of the chuck, a tool or the factory supplied protective pin must always be fixed, even when not in use.
-  Never clean the handpiece with compressed air!
-  The required chuck keys are located in the underside of the handpiece holder.

### 8.2. Removing/changing the motor cable (see picture above)

1. Unscrew the cap (2) from the motor
2. Loosen the cable by pulling out the plug-in seal (1)