



03



04



05



06

## FITTING GEMS, DIAMONDS AND OTHER STONES TO A SETTING

- 01 Seat the stone in the setting to check for areas that might need attention
  - 02 Shake can of Quickcheck well before use
  - 03 Spray the Quickcheck onto the surface of the metal, coating the entire setting or just the suspected trouble area with a fine layer of the colored powder
  - 04 Fit the stone into the setting, pressing slightly and then remove the stone
  - 05 Inspect the setting for areas where the Quickcheck was removed. These areas will highlight the spots where the metal may need to be removed to allow for a more precise fit
- Note: Sometimes the Quickcheck is not removed, but when you inspect the areas with a loop you will find that the powder is actually compressed and the powder is slightly darker in the areas where the metal needs to be removed
- 06 The high areas can be removed with burs, files or engravers
  - 07 Repeat steps as needed until a perfect fit is achieved



02



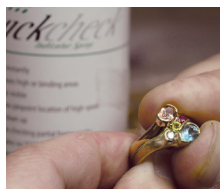
03



04

## FITTING A STONE TO A WAX SETTING

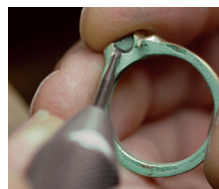
- 01 Shake can of Quickcheck well before use
  - 02 Spray a light coat of Quickcheck onto the wax setting
  - 03 Fit stone into wax setting and push slightly or rock, then remove the stone
  - 04 Inspect the setting for areas where Quickcheck was removed.
  - 05 Adjust wax in order to insure a level stone
  - 06 Repeat steps as needed until a perfect fit is achieved
- Note: Quickcheck White works well in contrast to darker colored waxes



03



04



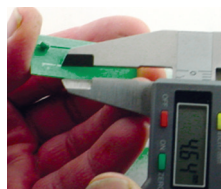
05

## GAINING THE PERFECT FIT WITH INTERLOCKING RINGS

- 01 Shake can of Quickcheck well before each use
- 02 Spray the Quickcheck onto one of the rings, coating one entire side
- 03 Push both rings together and hold in place tightly
- 04 When separated the coated ring will reveal marks indicating the areas that are preventing a perfect fit
- 05 The marked areas can be removed with a file, but smaller crevices may need to be removed using grinding burs
- 06 Remove the Quickcheck and repeat steps as needed until a perfect fit is achieved



02



03



04

## USE WITH ENGRAVING AND STAMPING

- 01 Shake can of Quickcheck well before each use
- 02 Apply an even and thin coat to the piece that will be engraved or stamped
- 03 The layer of Quickcheck will allow you to mock the engravings or stampings that will be applied to the piece. This will allow you to check for appropriate space and design
- 04 Guide lines can be applied or guide letters can be scribed with a sharp pencil
- 05 By laying a stamp down gently in the powder, then removing the stamp, the design will be previewed